

# CNC Oil Skimmer, minimal care equipment for coolant

Extended coolant life and minimise contamination

Coolant management upgrade for CNC machines with the CNC Oil Skimmer  
Experience more efficient operation, healthier environment and cost saving through Remote Control

## REMOTE CONTROL

**Display**  
Monitoring the cutting fluid temperature in real time.  
• °C : Celsius, °F : Fahrenheit  
Displaying the status of set-up.

**Rotation set**

**Morning Clean (Hotkey)**  
Press the button at the end of the day. You should find cleaner coolant the following morning.



**Run time**  
Run and Delay repeat operation in 5 modes

- Run 10min. ↔ Delay 50min.
- Run 20min. ↔ Delay 40min.
- Run 30min. ↔ Delay 30min.
- Run 40min. ↔ Delay 20min.
- Run 50min. ↔ Delay 10min.

**Timer**

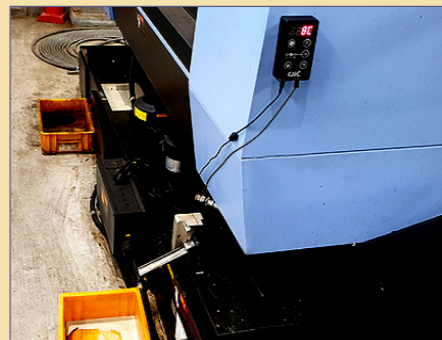
- 6h : Power off after 6 hours of operation
- 12h : Power off after 12 hours of operation
- ∞ : Continuous operation

**Power ON/OFF**



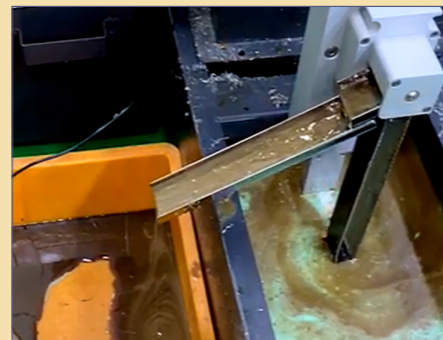
### Easy Installation

No bolts or brackets required to secure it, just place directly into the coolant tank.



### Efficient Operation

Simple and very effective control through the remote control for minimal operator intervention.



### Powerful Performance

Quickly drags tramp oil from far away and cutting fluid circulation

# CNC OIL SKIMMER

## Tramp Oil Removal & Coolant Circulation

New conceptual remote controlled oil skimmer for efficient management of coolant



## UNIQUE FEATURES

- Freestanding base
- Remote controlled operation panel
- Vortex inducing impeller
- Built-in height adjustment
- Long lasting, oil resistant, urethane belt
- Coated drive pulleys - no belt slippage
- Fast, efficient, remote operation



**CNC Oil Skimmer**  
Remote Control

T. : 01562 602333  
E. : info@fse.co.uk  
W. : www.fse.co.uk





# CNC OIL SKIMMER - AVAILABLE MODELS

## RX240 Base Plate Only

### RX240

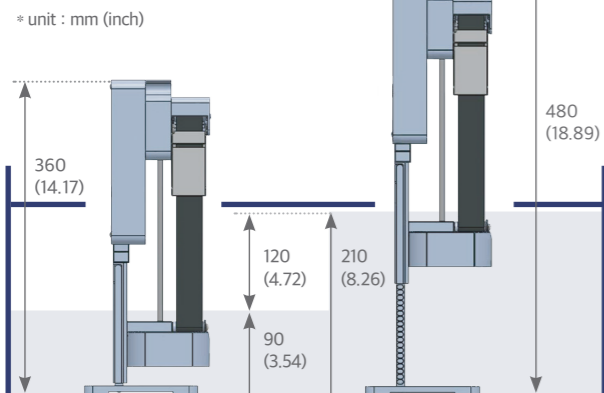


**Overall height**  
360~480mm (14.17~18.89inch)

**Distance between centres**  
240mm (9.44inch)

**Change in coolant level**  
90~210mm  
(from the bottom of the tank)  
(3.54~8.26inch)

**Skimming stroke**  
0~120mm (0~4.72inch)



## RX330 Base Plate and Magnetic Bracket (both included)

### RX330 when fitted with the base plate (stand)

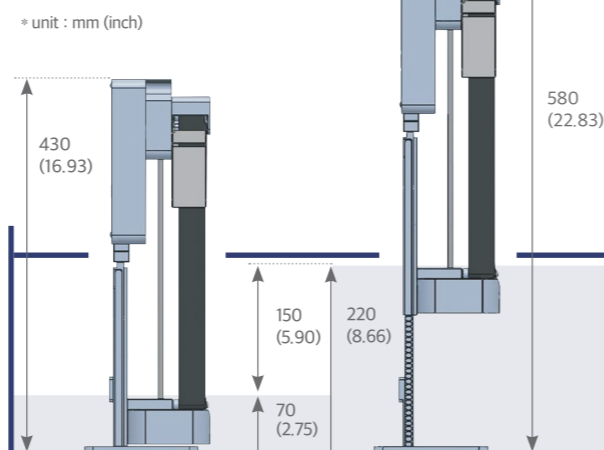


**Overall height**  
430~580mm (16.93~22.83inch)

**Distance between centres**  
330mm (12.99inch)

**Change in coolant level**  
70~220mm  
(from the top of the tank)  
(2.75~8.66inch)

**Skimming stroke**  
0~150mm (0~5.90inch)



### RX330 when fitted with the magnetic bracket

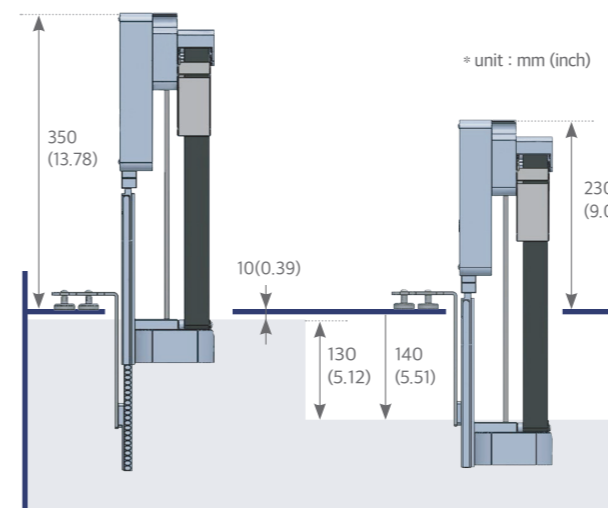


**Overall height**  
420~570mm (16.53~22.44inch)

**Distance between centres**  
330mm (12.99inch)

**Change in coolant level**  
20~140mm  
(from the top of the tank)  
(0.78~5.51inch)

**Skimming stroke**  
0~130mm (0~5.12inch)



## RX450 Magnetic Bracket Only

### RX450

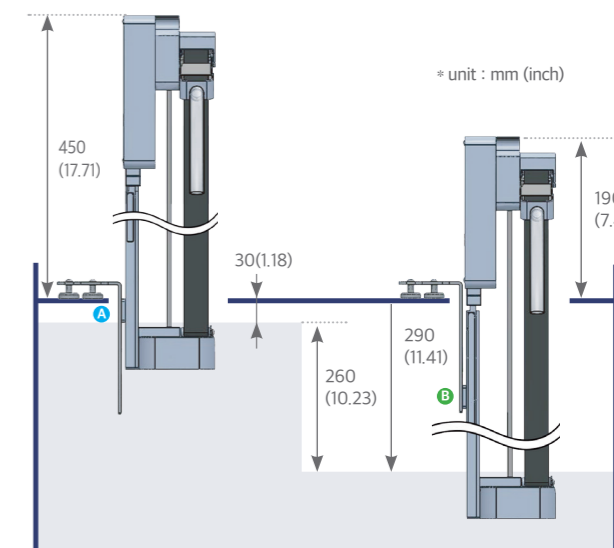


**Overall height**  
540mm (21.26inch)

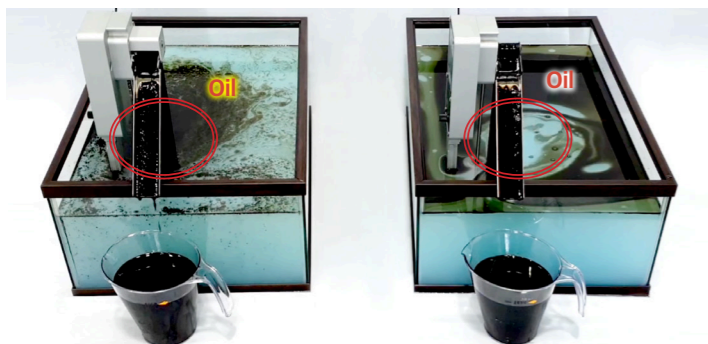
**Distance between centres**  
450mm (17.71inch)

**Change in coolant level**  
30~290mm  
(from the top of the tank)  
(1.18~11.41inch)

**Skimming stroke**  
0~260mm (0~11.41inch)



## Product Performance



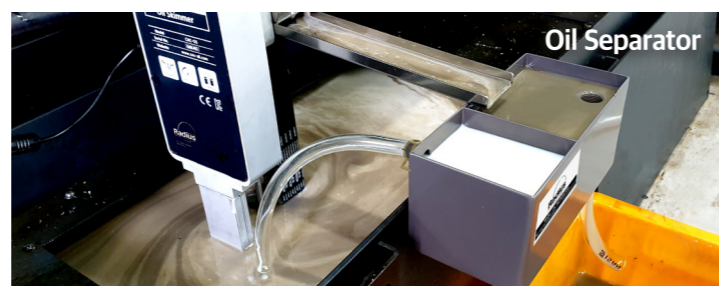
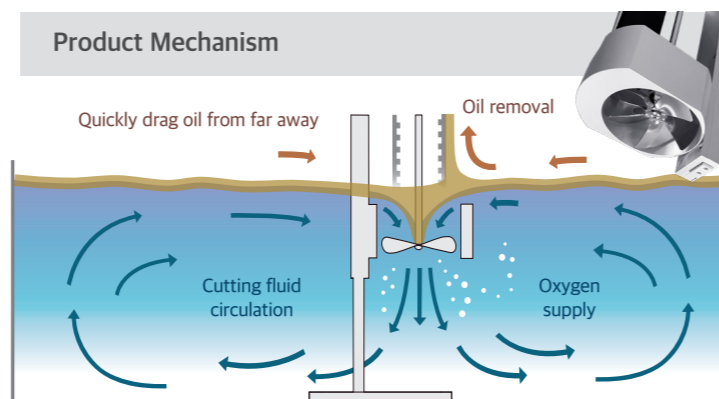
With Impeller

Without Impeller

Oil induced inside of the circle  
⇒ Tramp Oil is collected around the belt  
⇒ Faster removal of Tramp Oil

Oil remained outside of the circle  
⇒ Tramp Oil is left away from the belt  
⇒ Faster removal of Tramp Oil

## Product Mechanism



## Accessories included



The NEW Urethane belt lasts up to 3 times longer than the standard belt being highly resistant to oil.

Model	Base Plate	Magnetic Bracket	Separator	Hose Oil Guide	Urethane Belt
RX240	●		●	●	●
RX330	●	●	●	●	●
RX450		●	●	●	●

※ Power Adapter : Input A.C. 100~240V, Output D.C. 3~19V(50/60Hz)